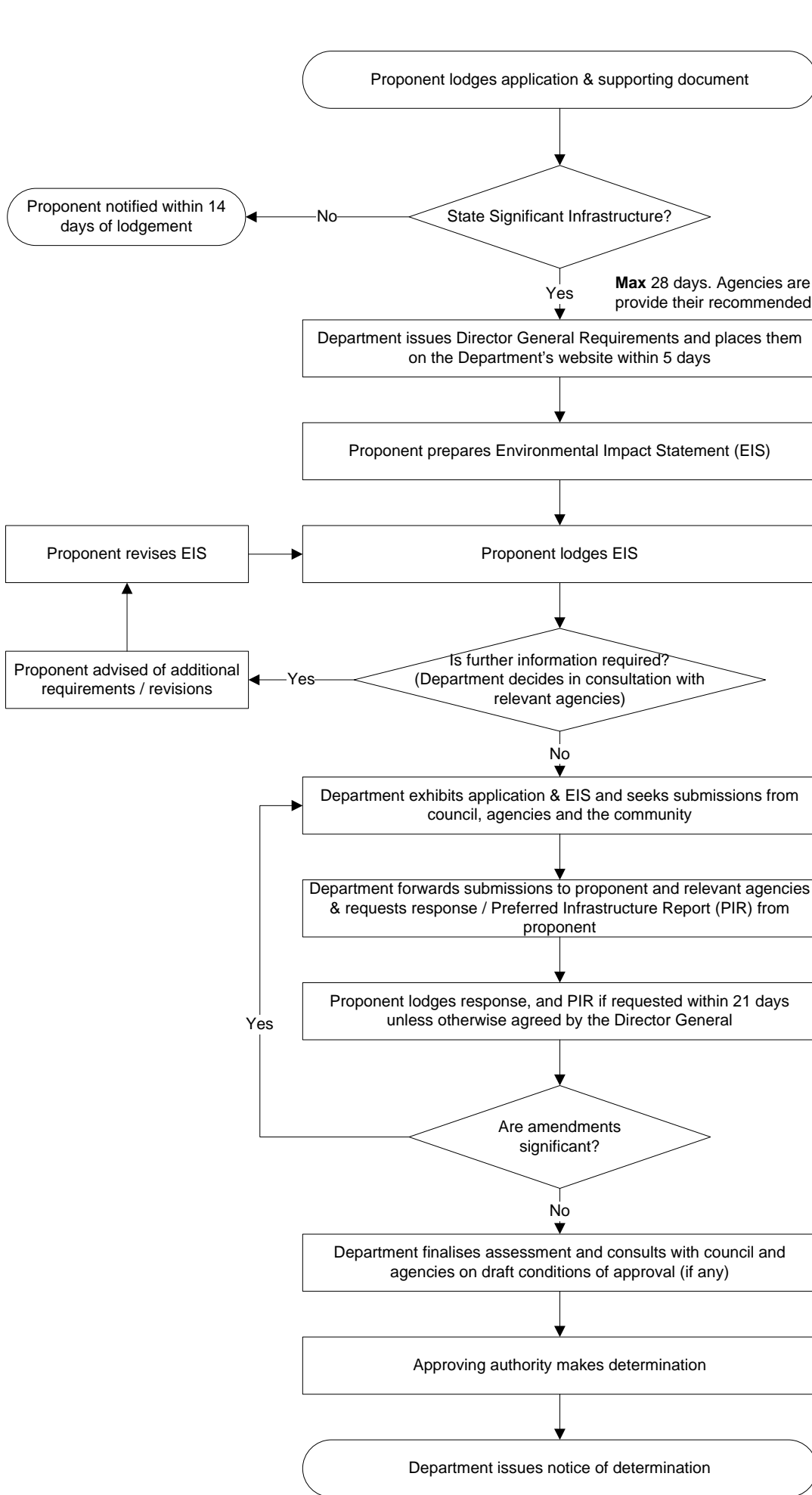


# State Significant Infrastructure Flowchart



Lodgement online (by proponent).

Application & supporting documents forwarded to ED, MPA, who refers to appropriate Director.

Major Projects Panel – for discussion (e.g. - on list of applications received each week).

**Max 28 days.** Agencies are given 14 days to provide their recommended requirements

For complex developments, the Department may hold a Planning Focus Meeting with council and agencies before issuing DGR's.

21 days to advise proponent of any additional requirements.

Minimum 30 days, extended for school holidays and Christmas/New Year period.

Submissions forwarded and made available on Department's website within 10 days of close of exhibition.

Response to submissions and PIR placed on Department's website once received.

The DG's assessment report is placed on the Department's website once it is forwarded to the Minister or the PAC. If an officer of the Department determines the application under delegation, the report is placed on the website once the application is determined.

Notices issued within 14 days of determination.